

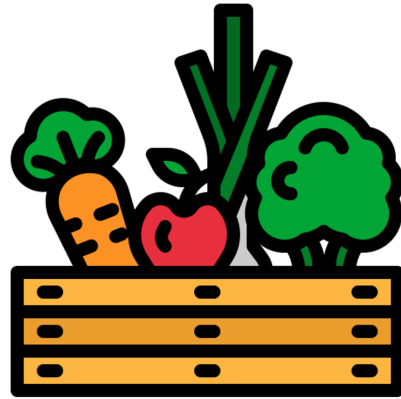
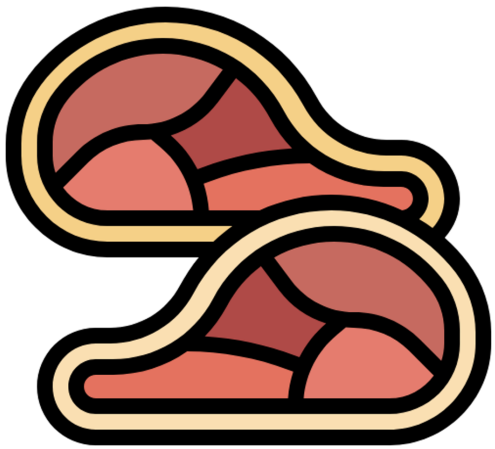
# Scalable Cultivated Meat

Patricia Bubner, PhD

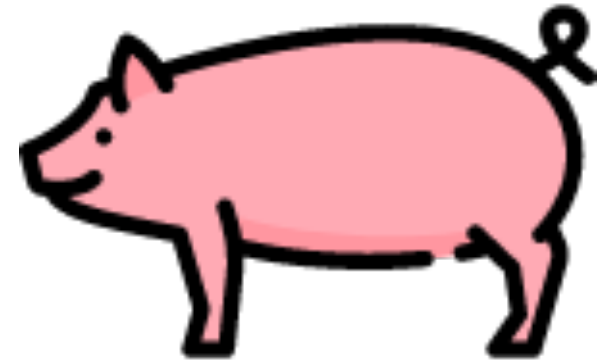
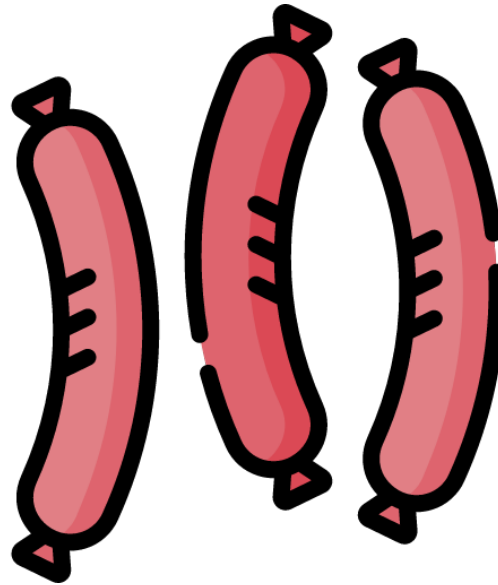
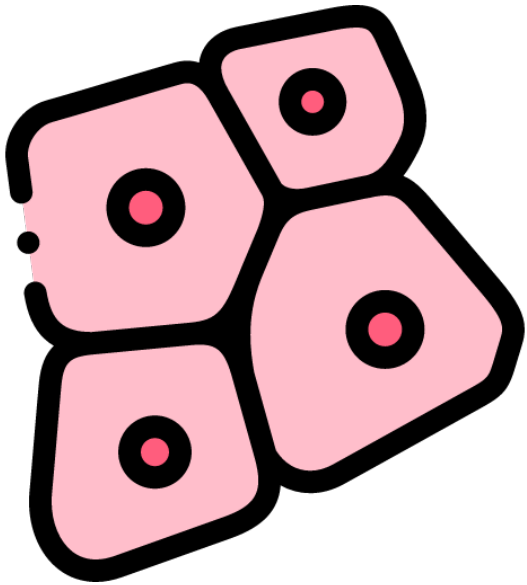
[patriciab@orbillion.com](mailto:patriciab@orbillion.com)



Confidential and Proprietary. Copyright (c) by Orbillion Bio, Inc. All Rights Reserved.



## How to Feed 10 Billion?



# What is Cultivated Meat?

# In 2020, Cultivated Meat Is Still Too Expensive



**Traditional Meat**  
\$10 / lb

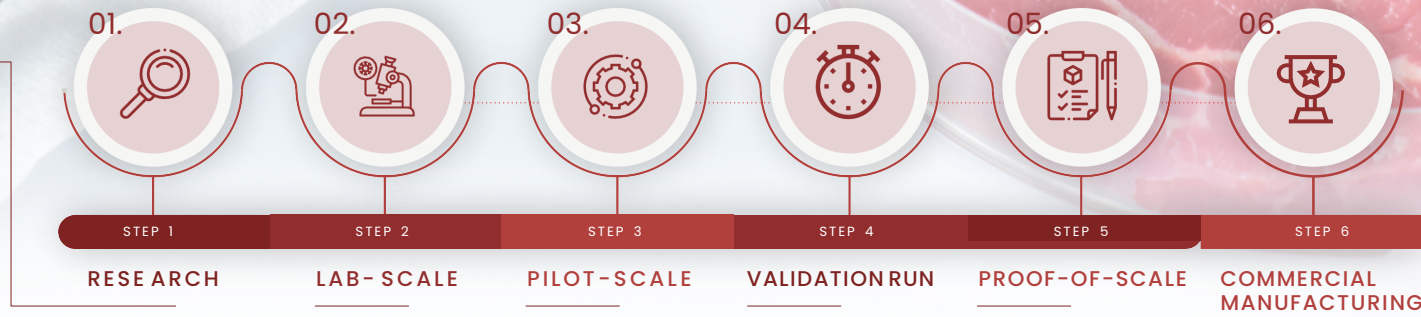
**Cultivated Meat**  
>\$5000 / lb



**WE FIND  
THE BEST  
CELL LINES.**

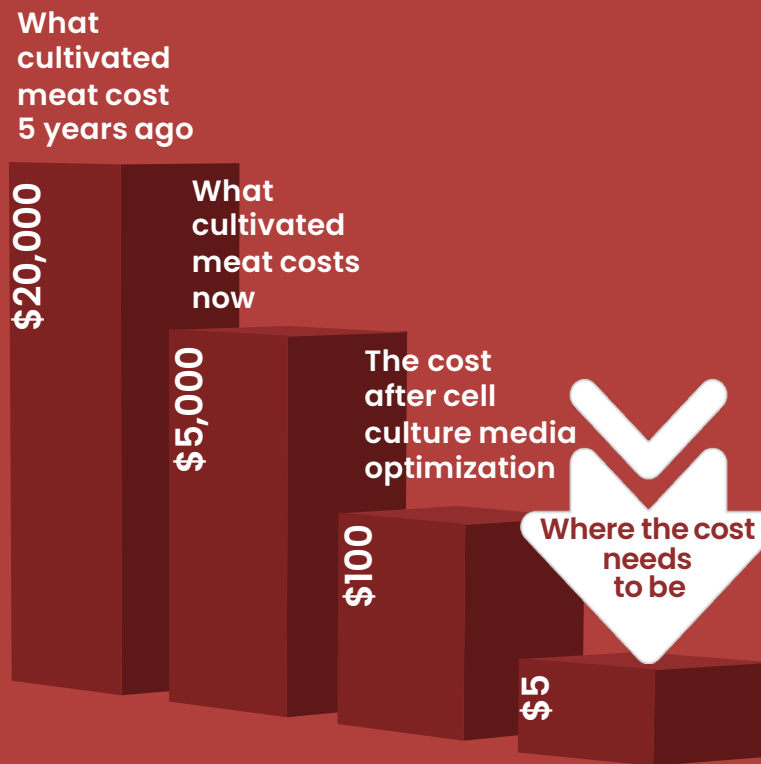
**CELLS GROW 2X FASTER**  
**30% LONGER PROLIFERATION**  
**1000s OF CELL LINES SCREENED PER DAY**

Cell Isolation  
Cell Expansion  
Cryopreservation  
Longevity  
Optimization  
Cell Banking



Confidential and Proprietary - Orbillion Bio, Inc.

# Price Parity Cannot Be Reached Without Access To The Right Cell Lines



# Price Parity Cannot Be Reached Without Access To The Right Cell Lines



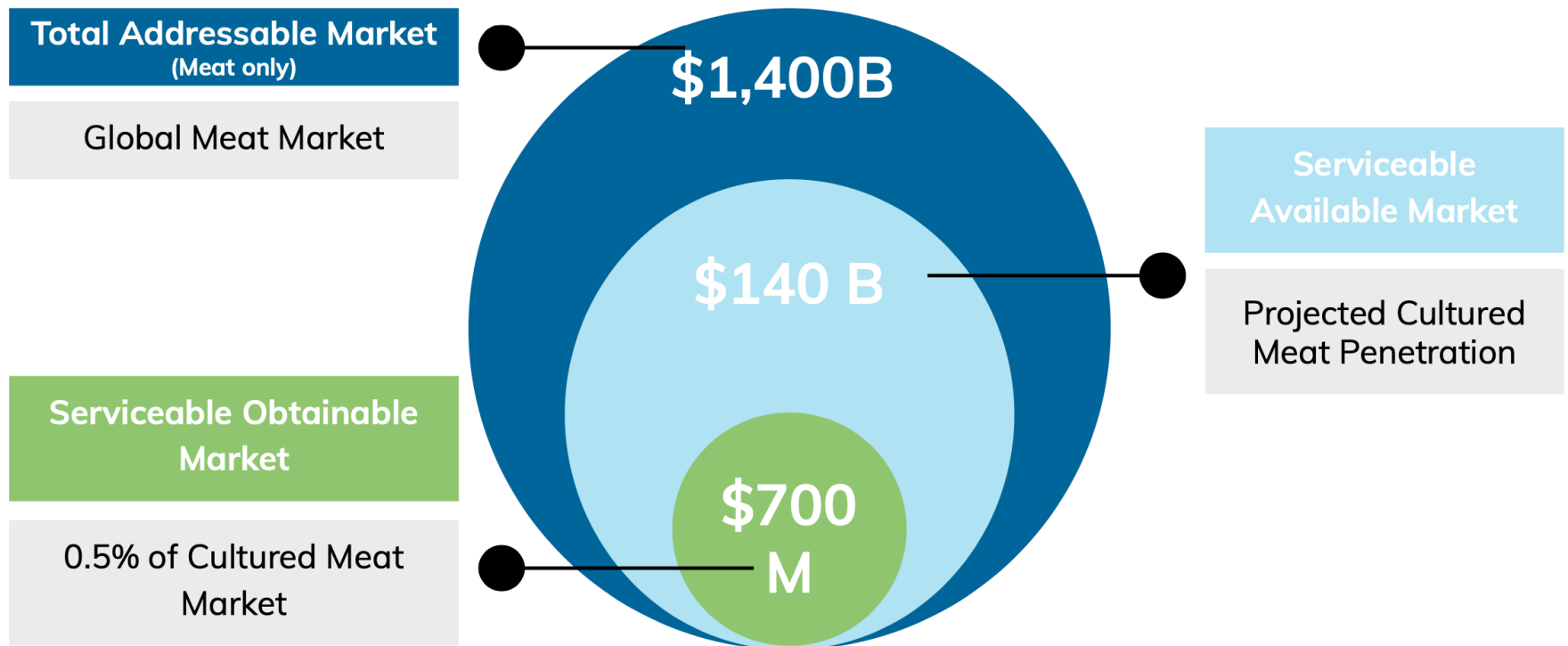
# 100% Premium Cultivated Meat Products

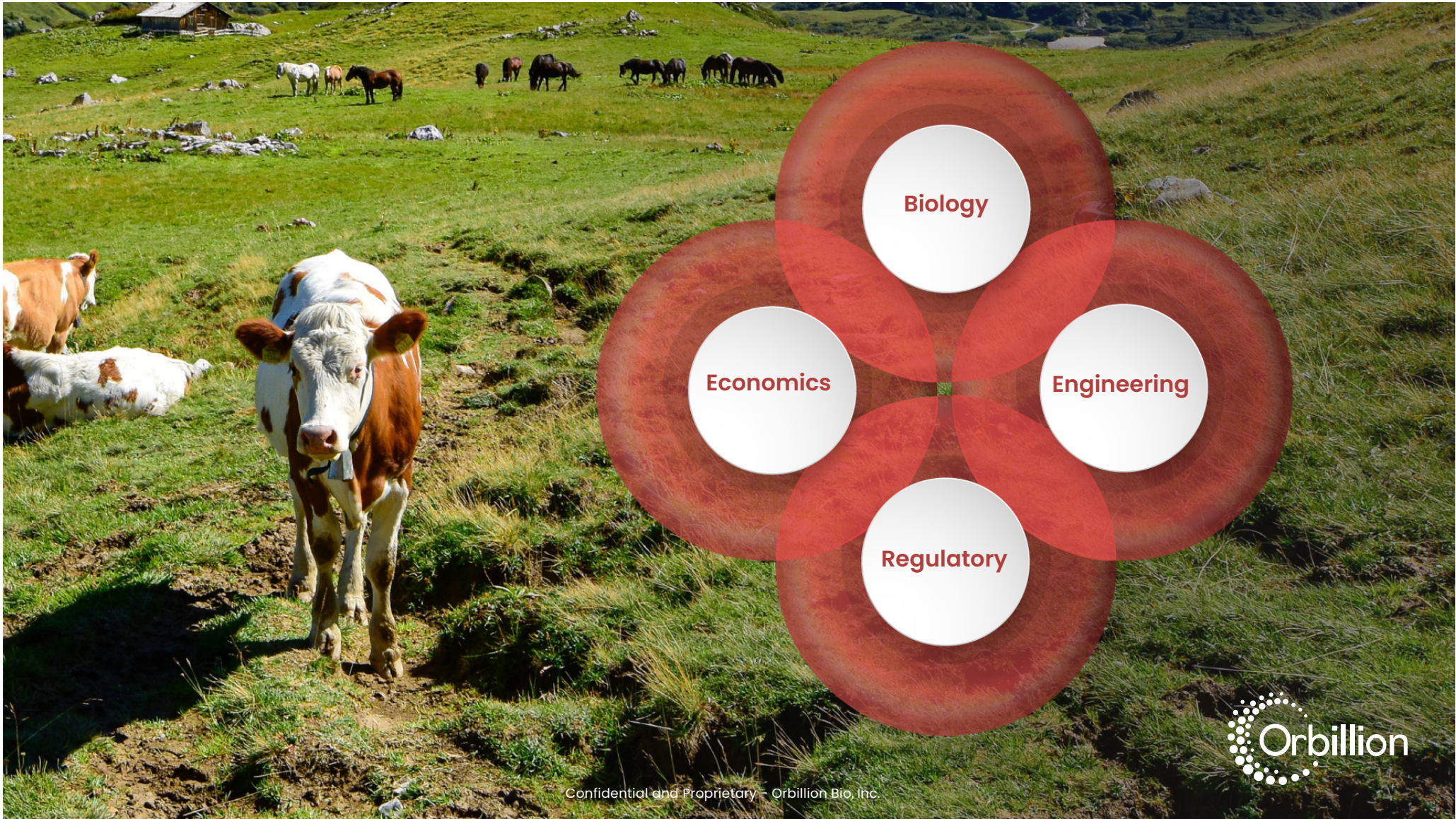


Confidential and Proprietary - Orbillion Bio, Inc.



# Global Meat Market Size 2030 in Billion USD





**Biology**

**Economics**

**Engineering**

**Regulatory**



# Team



**Patricia Bubner, PhD**  
CEO, Co-Founder



**Gabriel Levesque-Tremblay, PhD**  
Co-Founder



**Laura Daley, PhD**  
Lead Scientist



# Advisors and Support



**Prof. Peter Ertl**



Confidential and Proprietary - Orbillion Bio, Inc.

# The Ask

ACCELERATE  
CELL LINE  
OPTIMIZATION



DEVELOPING  
SCALABLE  
CELL LINES



BUILD HIGH  
DENSITY  
BIOPROCESS



SEED  
FUNDING



# Thank you!



[www.orbillion.com](http://www.orbillion.com)

[patriciab@orbillion.com](mailto:patriciab@orbillion.com)

